



Philanthropy and Social Innovation



Social innovation refers to new ways of combining ideas, generating projects, or configuring interventions or services when responding to social needs that have been left unanswered. This new approach takes on a transformative social dimension in that its novelty is based on social components able to influence and transform institutions.

Social innovation plays an important role in philanthropy and is a useful tool available to grantmaking foundations in achieving their goals. Social innovation allows us to distance ourselves from material or technological innovations and

refocus on the social aspect, keeping 'economic' and 'political' considerations on the sidelines.

This shift of focus toward the social aspect requires supporting social actors for whom the defence of social and environmental justice is a central and non-negotiable cause. It also rests on supporting a post-modernization of society, where philanthropy's traditional areas of focus, education, health and the arts, are approached with an acknowledgement of the deeply-rooted inequalities and inequities between social groups and territories, of systemic racism and other forms of discrimination.

PhiLab's special edition brings together a variety of content from our Canadian and International Hubs, including blog articles, interviews, videos and more, in an attempt to cover the complex and interesting interplay of social innovation and philanthropy.

Enjoy your reading!

Newsletter Contents

- Special Edition : Philanthropy and Social Innovation
 - Flashback: Philanthropy and SDGs
- News from our Regional Centers
- News from our International Research Units
- News from our Members
- News from Our Partners
- Alliance featured article of the month



Editorial: Philanthropy and Social Innovation

by Jonathan Folcot, Assistant Professor at *École d'innovation sociale Élisabeth-Bruyère de l'Université Saint-Paul*

Interview with Neca Setubal, President of the Grupo de Institutos, Fundações e Empresas (GIFE)

Entrevista com Neca Setuba - A filantropia e a inovação social no Brasil *(in Portuguese)*

by Lidia Eugenia Cavalcante Lima, International Hub - Latin America



Interview with Denis Bussièrès, Coordonnator of the *Réseau Québécois en Innovation Sociale* (in French only)

by Zeynep Torun, Quebec Hub

Interview with Diane Roussin, Indigenous UWinnipeg

by Andrea Kosovacs Sykes, Ontario Hub



Introduction to Design Thinking for Social Innovation: A Tale of Three Labs (NouLAB, EPIlab, and PhiLab)

by Garrett Ward Richards, Atlantic Hub

Limits and challenges of access to agroecological food – social technology and solidarity marketing at the Bem da Terra Virtual Market, Pelotas, Brazil

by Miria Raquel da Rocha, Tiago de Garcia Nunes and Aline Mendonça dos Santos, International Hub - Latin America



PhiLab Research Project Introduction:

Ongoing Case Research on Philanthropic innovation for sustainability: A multiple case study on how foundations support Sustainable Development Goals

by Marta Rey-Garcia, International Hub (Spain) and Rosane Dal Magro, Quebec Hub

Social Innovation in Canada: Reflections on Past, Present and Future Directions

by The Philanthropist and The McConnell Foundation



Is Social Innovation a Useful Tool in a Crisis? Lessons From COVID-19

by Paul McArthur and Laurence Miall of the McConnell Foundation



Social Innovation Series



This series is published as a collaboration between
The Philanthropist and the McConnell Foundation

The Philanthropist

McConnell



Video: Qu'est-ce que la mesure d'impact?

With Gabriel Salathé-Beaulieu, project manager at
TIESS

Le rôle de l'économie sociale dans la transition vers
l'après-croissance

by **Éric Pineault**, TIESS



Flashback: Philanthropy and SDGs

Content has been added to our last Special Edition:

Entrevue avec **Jean-Marc Mangin**, président directeur
général de Fondations philanthropiques Canada:

Tenir le cap des objectifs du développement durable
en contexte de crise sanitaire et socioéconomique

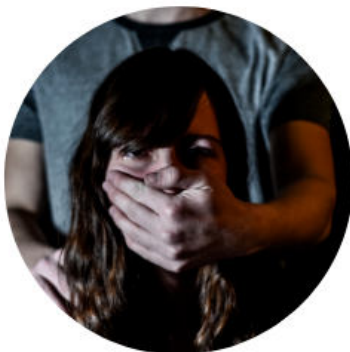


by **Manuel Litalien**, Ontario Hub



PhiLab's Quebec Hub works in close collaboration with UdeM's *Faculté d'éducation permanente*(FEP), particularly with the certificate in Philanthropic Management (*gestion philanthropique*), under the direction of Caroline Bergeron. At the end of the program, students must complete an integrative project, a study of sorts, to receive their diploma. This year, it was [Diane Alalouf-Hall](#), Ph.D. candidate at UQAM and PhiLab researcher, who oversaw the class. We are very happy to present the very different projects of three of the certificate's students: Pascale Jullien, Elaine Taillon and Jennifer Fils-Aimé.

Despite the teaching and data collection challenges due to COVID-19, they all succeeded in completing their research.
Congratulations!



[Comment augmenter l'intérêt pour une cause invisible?](#)

by Jennifer Fils-Aimé

Under the supervision of [Diane Alalouf-Hall](#)

La récurrence des enjeux de dotation de ressources bénévoles: Quelles en sont les causes possibles?

by Elaine Taillon

Under the supervision of [Diane Alalouf-Hall](#)



La survie des organismes de bienfaisance en temps de crise : concilier les besoins financiers pressants des OBE et la capacité des grandes corporations à leur allouer des fonds rapidement

by Jullien Lassagne

Under the supervision of [Diane Alalouf-Hall](#)

[Adam Saifer](#), a member of PhiLab's Quebec Hub, was recently quoted in an article by Future of Good:

Can donor-advised-funds save Canada's social impact sector?

"Donor-advised funds represent many of the issues plaguing philanthropy itself – a perception of opacity, a lack of accountability, and the question of whether funds are providing enough to charity in the first place."





Adam Saifer has also recently written article,
published by The Conversation Canada:

[COVID-19 has exposed the limits of philanthropy](#)

"...Canadian philanthropic foundations have quietly distributed more than \$100 million in emergency funds to support communities most impacted by COVID-19. In the process, however, philanthropy has revealed its limits as a mechanism for addressing the societal inequalities magnified by the pandemic."

The [Collectif des fondations québécoises contre les inégalités](#) has responded to Adam Saifer's article:

"In 2020, inequality and its effects can no longer be ignored. The pandemic has laid bare, exploited and exacerbated existing inequalities of health, income, wealth and social standing. These inequalities are not new, having been created and further entrenched by decades of fiscal reform and welfare state retrenchment."



[Read more here](#)





New research Project: COVID-19 Case Studies

In an attempt to provide a preliminary overview of responses to COVID-19 within the Canadian philanthropic community, PhiLab has initiated a series of small case studies evaluating recent initiatives in the field. The research was conducted by [Isidora G. Sidorovska](#) of the Ontario Hub, with the support of [Jean-Marc Fontan](#), UQAM and [Manuel Litalien](#), Nippising University.

PhiLab's work has produced four case studies so far:

- Two of these reports review specific initiatives by grantmaking foundations in response to the current crisis: [The Indigenous Peoples Resilience Fund](#) and The [GIVE5 Pledge](#).
- Our third case study reviews the response of the [Lawson Foundation](#), analyzing the various initiatives it has undertaken in the wake of the COVID-19 outbreak.
- Our last report evaluates the position and response of grantmaking foundations throughout the pandemic identifying early learnings and future challenges.

[Susan Philips](#), a member of PhiLab's Ontario hub, has undertaken a Delphi-based study of the opinions of experts in the field as part of a larger effort to grasp the influence of the pandemic over Canada's grantmaking foundations.





[Susan Philips](#) has also written a chapter that will appear in *The Routledge Companion to Nonprofit Management*:

[A Changing Management Context: The US, UK, Canada and Australia](#)

"This chapter assesses the implications of three sets of recent developments in: the regulatory regimes; philanthropy and social finance; and contracting for social services."



Western Regional Center - Regina



[David Peacock](#), a research member of the Western Hub has just published an article in line with his research project "The Carnegie Foundation and Canadian Higher Education"

[The continuing influence of the Carnegie Foundation on Canadian post-secondary education](#)

[Al Bhanji](#), the Western Hub Coordinator, has published a quick overview of a recent report by PFC:

Overview: [Philanthropic Foundations Canada August 2020 Report – Philanthropy Responds to COVID-19](#)

[Read the full report here](#)





International Research Units

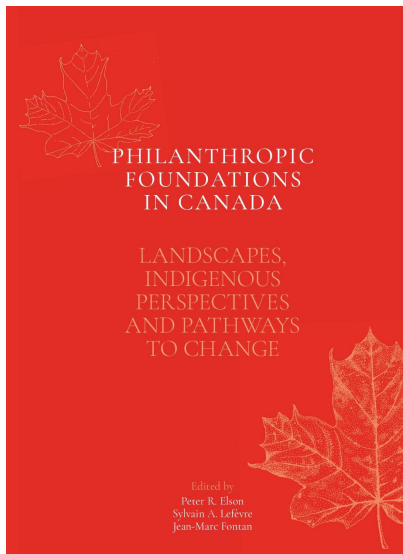


PhiLab's African International Research Unit has recently published an interview:

Entrevue avec Irène Sesmaisons: La philanthropie en Afrique racontée par des acteurs d'expérience

By [Lynda Rey](#), Researcher

PhiLab's most recent publication

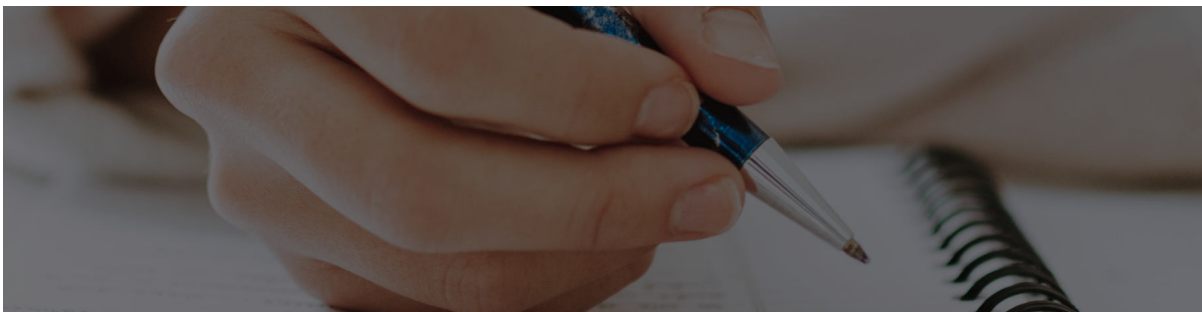


Now available!

PhiLab's most recent book has been published!

Philanthropic Foundations in Canada: Landscapes, Indigenous Perspectives and Pathways to Change

[Find the pdf, e-book and printed versions here](#)



News from our members.



[Juniper Glass](#), a member of PhiLab's Quebec Hub has recently co-authored a report on the linkages between systems change practice and feminist change work.:

[Bridging the fields of feminist and systems practice: Building ecosystems for gender equity](#)

"We need feminist leadership -- and system change strategies -- today more than ever. Complex challenges of the moment, like climate change, the COVID-19 crisis, racism, rising economic inequality and gender based violence call for new ways of leading."

News from our partners.



Institut Mallet has just published a video interview with Jean-Marc Chouinard, President of The Fondation Lucie et André Chagnon:

[Les impacts de la COVID-19 sur le secteur et la culture philanthropique: Entrevue avec Jean-Marc Chouinard](#)

CFC will be hosting a series of webinars over the next few months. The topics covered will include anti-racism, governance and financial fundamentals, and corporate philanthropy.



[Learn more and register here](#)



Imagine Canada has published a report on the Investment Readiness in Canada's Charitable Sector:

[Are Charities Ready for Social Finance?](#)

PFC 2020 Conference in Québec City
RESCHEDULED

Upcoming webinars
#PFCwebinar Wednesday Series



October 14th, 2PM Eastern - [Black Canadian Philanthropic Foundations](#)

October 21st, 2PM Eastern - [Data and the Philanthropic Sector](#)



Centraide
du Grand Montréal

The Collectif Impact Project (CIP), piloted by Centraide du Grand Montréal, was featured in L'Actualité:

[Aide-toi et le PIC t'aidera](#)



The CIP was one of the laureates of the 2nd edition of the Social Impact Award.

OFFRE D'EMPLOI

Notre partenaire, la Fondation Béati est présentement à la recherche d'un(e) Conseiller(ère) au développement philanthropique



[Consultez l'offre ici](#)

The Fondation Lucie et André Chagnon have recently announced their intent to donate 500 Million dollars by 2025.



Read their press release here:

[Face à la crise, la Fondation Chagnon donnera jusqu'à 500 millions \\$ d'ici 2025](#)

[Add your profile to our new database!](#)

Content filter

All Education Categories 

All Professional Types 

All Organisation Sectors 

All Organisation Types 

FILTER

Submit a profile

Submit your profile to become a part of the philanthropy profiles.

SUBMIT YOUR PROFILE

Inspired by the success of our [Careers in philanthropy, An overview of the sector in 42 profiles](#) publication, we have created a database on our website.

This database includes the first 42 portraits but also offers the possibility to [add your own profile!](#)

Help us shed light on the many actors in the philanthropic sector and the diversity of roles they play by adding yours today.





Alliance featured article of the month



As a partner of PhiLab, Alliance Magazine has made the Special Features of their [Indigenous Philanthropy issue](#) available to our members and readers:

Investment, innovation and respect

"Funders should respect Indigenous Peoples' determination of their own priorities. While donors may have funds, they don't have the ideas, people and energy to make an investment real."



Alliance
For philanthropy and social investment worldwide

20%

Discount on subscriptions
For PhiLab members

Support PhiLab: Participate on social media!

In order to increase the reach of PhiLab's publications, you can help us by participating in social media! A simple 'like', comment or share helps us disseminate knowledge to the sector.

We now have four active social media platforms , there's one for everyone, no matter your style!

PhiLab students still have access to the [Facebook group](#) which is reserved for them.



Facebook Twitter LinkedIn Youtube Academia

This newsletter is sent by the Canadian Partnership Research Network

[Unsubscribe](#)