



## The Invisible Causes of Philanthropy



In the first sense, "invisible causes" are the social movements for equity, inclusion, and justice that philanthropic funders all too often ignore. These causes are 'invisible' to philanthropy insofar as they are not effectively integrated into foundations' organizational and grantmaking practices and goals.

In the second sense, "invisible causes" are the taken-for-granted ; societal structures and institutions that create and maintain these inequities, exclusions, and injustices. While these racist, sexist, anti-Indigenous, anti-poor, and ableist structures and institutions manifest through concrete social and

organizational policies, they are made “invisible” to philanthropic funders by ideology.

This special edition, led by PhiLab's Quebec Hub, looks into some of these 'invisible causes'. We hope to start a discussion on how philanthropy can shed light onto those causes kept in the shadows.

Enjoy your reading!

## Newsletter Contents

- Special Edition : The Invisible Causes of Philanthropy
- Next edition: Philanthropy, Climate Change & the Environment
- Upcoming events
- News from our Regional Centers
- News from our International Research Units
- News from our Members
- News from Our Partners
- Alliance featured article of the month



### Editorial: Invisible Causes and Philanthropy

by Adam Saifer, Quebec Hub Supervisor

### Interview with Meghan Joy: Philanthropy and Seniors' Issues

by Adam Saifer, Quebec Hub Supervisor



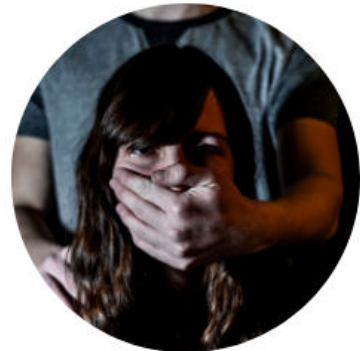


Vidéo: Table Ronde Virtuelle: Augmenter la collaboration des fondations subventionnaires dans le secteur des personnes âgées  
(in French only)

With the Mirella & Lino Saputo Foundation, Présâges, and PhiLab's Quebec Hub

Comment augmenter l'intérêt pour une cause invisible?

by Jennifer Fils-Aimé, Quebec Hub  
Supervised by Diane Alalouf-Hall



Book: La solidarité en crise, Centraide et la nouvelle philanthropie

by Taëb Hafsi & Saouré Kouamé, Quebec Hub

Interview with Claude Pinard, Executive Director of the Mirella and Lino Saputo Foundation

by Jennifer Fils-Aimé, Quebec Hub





Accroître le soutien des entreprises à une cause « invisible »

by Saouré Kouamé, Ontario Hub

## Upcoming Special Edition: Philanthropy, Climate Change & the Environment

Next month's special edition is led by PhiLab's Atlantic Hub and will be on Philanthropy, Climate Change & the Environment .

Would you like to share content on this subject?  
Please contact Brady Reid, the Atlantic Hub coordinator at [philab@grenfell.mun.ca](mailto:philab@grenfell.mun.ca)



News

## Upcoming events



**PFC Conference 2020:**  
Fast Forward: Harnessing the Power of  
Philanthropy to Build a Better Tomorrow  
November 17th-19th

The event will serve PFC members and the broader philanthropic community to pause, reflect, and plan ahead. PFC will offer a Young Professionals Pricing to encourage the change-makers, innovators of tomorrow to be part of the conversation today. *Simultaneous Translation offered in all panels and plenaries*

[Register here](#)



As with every year, PhiLab's Quebec Hub is organizing its Study Day. The objective is to present each student's personal project (memoir, thesis). This event is an opportunity to practice presenting but also to seek advice from the other students and professors (questions on methodology, data collection, writing, sampling, etc.).

Event organized by the Quebec Hub  
For more information:  
[philabquebec@uqam.ca](mailto:philabquebec@uqam.ca)

UQAM | Département de sociologie

## 2e Journée d'étude du PhiLab Québec

26 NOVEMBRE 2020  
10H00 à 15h00  
EN LIGNE (ZOOM)

Rejoignez-vous à nous pour prendre connaissance des différents projets de recherche des étudiants-es du PhiLab Québec (Certificat, maîtrise et doctorat).

[philabquebec@uqam.ca](mailto:philabquebec@uqam.ca)

[Facebook](#) [LinkedIn](#) [Twitter](#)

INFLUENCE-PLAIDOYER-COLLABORATION  
Série 3 | novembre 2020

Prise de parole de femmes racisées et autochtones  
Un panel de femmes d'exception animé par  
Inès Chaalala, Fondation Philanthropique Canada



**FONDATION  
J. ARMAND  
BOMBARDIER**

Série 3 Influence-Plaidoyer-Collaboration : Prise de parole de femmes racisées et autochtones

November 24th 2020 9am - 10:30am EST

Animated by Inès Chaalala, director of learning and partnerships at PFC, this conversation will allow us to hear four incredible women, whose journeys have been marked by the act of speaking out.

Event hosted by the Fondation J. Armand Bombardier

[Register here](#)

ISTR 2021 Virtual Conference:  
Global Civil Society in Uncertain Times:  
Strengthening Diversity and Sustainability  
July 12th - 15th 2021

Based on concerns related to the coronavirus pandemic, the ISTR 14<sup>th</sup> International Conference a fully virtual event .



ISTR is still accepting submissions for their new sub-theme: Collective Action and Responsiveness in the Global Context until November 30th 2020.

[More information here](#)



New Quebec Hub Supervisor

As of October 15th 2020, [Adam Saifer](#) is replacing Caroline Bergeron as supervisor of the Quebec Hub. Welcome to the team!



*"Adam has a Ph.D. in Cultural Studies and has worked as a Postdoctoral Fellow at the Centre for Social Impact at Queen's University, and as an Assistant Adjunct Professor in the Department of Global Development Studies. His PhiLab research focuses on the barriers and challenges faced by equity-focused grantees in their relationship with philanthropic actors."*

The Quebec Hub has a new research partner:

### Conversations Philanthropiques en Culture

"The will of several philanthropic actors of Montreal led to the creation of Conversations Philanthropiques en Culture (CPC) is a group meant to foster exchanges and the sharing of experiences to support the healthy development of philanthropy in Montreal and in Quebec."



**Jean-Marc Fontan**, co-director of the PhiLab Network and Quebec Hub researcher, was interviewed for an article in LeDevoir on the impact of COVID-19 on fundraising events:

[La pandémie marque-t-elle la fin de l'événementiel en philanthropie?](#)

**Wendy Reid**, member of PhiLab's Quebec Hub, has recently published a report for the Conseil des Arts de Montréal:

[Repenser la philanthropie culturelle à Montréal: Les relations et la communauté](#)



**Sylvain A. Lefèvre**, Quebec Hub researcher and director of CRISES was interviewed on Radio Télévision Suisse (RTS) for their series Démocratie made in USA

[Sylvain discusses alternative foundations funded by rebel inheritors to fight social injustice](#)

Caroline Bergeron, Hilary Pearson and Diane Alalouf-Hall, Quebec Hub members, continue their research on the modernisation of the charity income tax law.

Two roundtables were held in the Fall, as well as a video recording. The results will be available in Spring 2021.

La modernisation de la loi de l'impôt pour les organismes de bienfaisance



The Western Hub has two new students:



Connor Thompson is a Ph.D. student at the University of Alberta.

He is working on "The Carnegie Foundation and Canadian Higher Education " PhiLab research project with Dr. David Peacock, a member of PhiLab's Western Hub.



**Sabina Trimble** is a Ph.D. student at the Centre for the Study of Philanthropy at the University of Kent in Canterbury, England, originally from Calgary. Her research situates Canadian philanthropy more explicitly within the Canadian scholarship on race, gender and settler colonialism, focused on how philanthropic organizations frame Indigenous/non-Indigenous relations to direct philanthropic practice.



**Peter R. Elson**, PhiLab's co-director and Western Hub researcher, participated in an event by **Indigenous Philanthropy Towards Self-Determination** on September 24th, 2020, and summarized his take on the key points:



**Indigenous Community Foundations: Filling the Void**



The Atlantic Hub has a new student!

**Katy Nedeljakov** is a first-year Environmental Policy Masters student. She is looking forward to conducting community-based research and hoping to learn more about the transfer of knowledge between eNGO's and the government.



# International Research Units

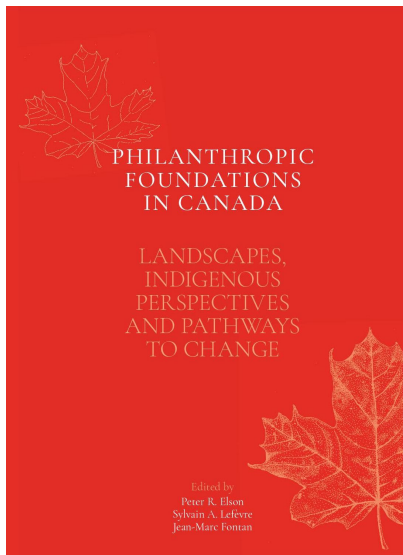


Anne Monier, a member of our International Research Unit in France, was interviewed on RTS - Radio Télévision Suisse for their series Démocratie made in USA

Philanthropy according to North American culture and logic

---

## PhiLab Publications



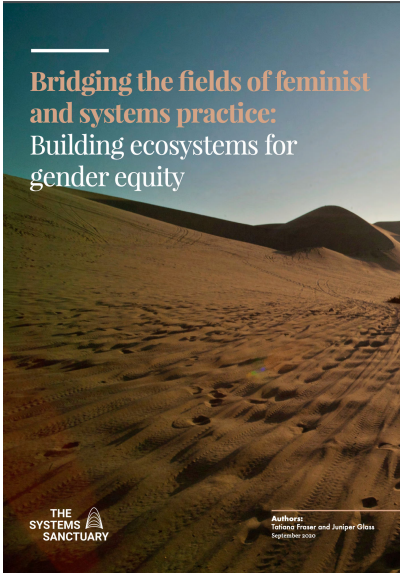
### New Book Review

Our partner, The Philanthropist, has recently published a book review of our most recent publication:

*Book Review: Philanthropic Foundations in Canada: Landscapes, Indigenous Perspectives and Pathways to Change*

---

News from our members.



**Juniper Glass**, a member of PhiLab's Quebec Hub has recently co-authored a report on the linkages between systems change practice and feminist change work.:

**Bridging the fields of feminist and systems practice: Building ecosystems for gender equity**

*"This report examines power and change deeply, unveiling key learnings and insights from both a feminist and system change perspective and illustrating the complementarity between the two."*

- Tasha Lackman, Vice president of the Foundation of Greater Montreal

**Émilie Fortin-Lefebvre**, membre du PhiLab Québec, in partnership with the First Nations of Quebec and Labrador Economic Development Commission, is working on a research project aimed at defining the practices as well as the challenges of accompagnement and obstacles to entrepreneurship



Learn more here:

[Premières Nations et Entrepreneuriat](#)





# Magazine

[Jean-Marc Fontan](#) and [Juan-Luis Klein](#), both members of the Quebec Hub, have recently published a manifesto for [Acfas Magazine](#):

[Manifeste pour un changement global](#)

Jean-Marc has also co-authored an editorial conversation for the same magazine:

[Dossier bifurcation : conversation éditoriale](#)

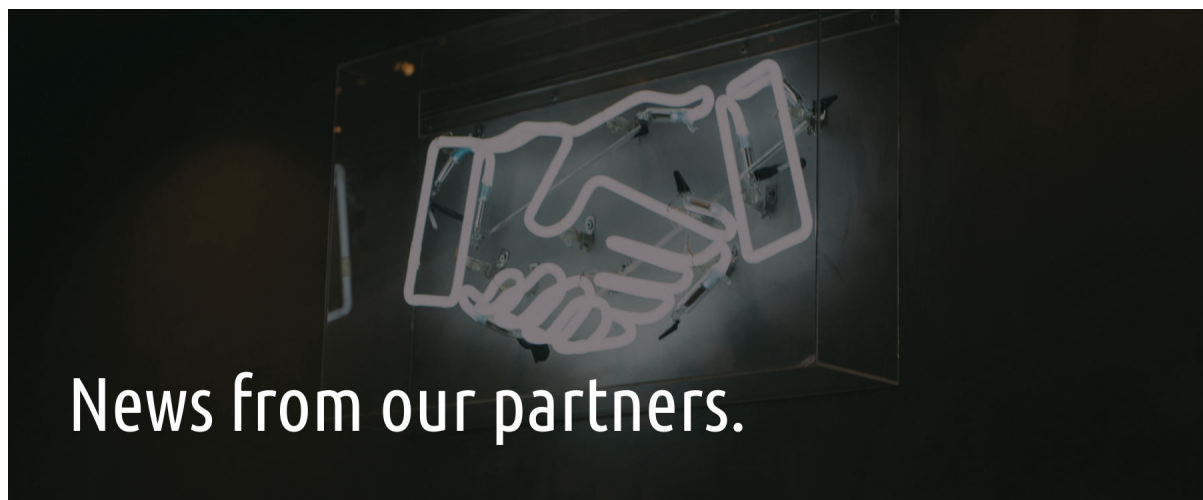


[François Brouard](#), co-supervisor of the Ontario Hub, is hosting a research discussion session on November 23rd at 12 pm:

[COVID-19 Crisis within Arts and Culture Sector and Comedy Industry in Québec and Canada](#)



For more information email: [parg@sprott.carleton.ca](mailto:parg@sprott.carleton.ca)



News from our partners.





Institut Mallet has published a video interview with Damien Contandriopoulos, Teacher in nursing sciences and public health policy specialist:

[Les impacts de la COVID-19 sur le secteur et la culture philanthropique: Entrevue avec Damien Contandriopoulos](#)

Community Foundations Canada will be hosting a series of webinars over the next few months. The topics covered will include anti-racism, governance and financial fundamentals, and corporate philanthropy.



[Learn more and register here](#)

Environment Funders Canada has published a new report, with the support of the Trottier Family Foundation:



[Building Canada's Low Carbon Future: Opportunities for the Philanthropic Sector](#)

---

## Featured Philanthropic Profile

PhiLab's Quebec Hub has launched a [Philanthropic Profile Database](#) in order to highlight the sector's professionals and the diversity of their roles.

Would you like to be featured here? [Fill out your profile here.](#)



**Adriana Beemans** is the Inclusive Local Economies Program Director at the Metcalf Foundation.

*"My program is focused on improving the economic livelihoods of low-income people in Toronto. I bring 20 years of experience in community development, leadership development, capacity building, program innovation and design."*

[Read her complete profile here](#)

---

## Alliance featured article of the month

# Alliance

For philanthropy and social investment worldwide



Alliance Magazine publishes coverage of a variety of philanthropic-centered events, including this conference in Tijuana, Mexico:

**Gender, childhood & youth on the move: 'visibilizing' the invisible**

*"...It became clear that an important outcome of this convening would be to 'visibilize the invisible' – uplift and learn from the women, youth, indigenous, and LGBT populations whose voices are often silenced by the systems and policies that are directly impacting them."*



# Alliance

For philanthropy and social investment worldwide

# 20%

Discount on subscriptions  
For PhiLab members

---

## Support PhiLab: Participate on social media!

In order to increase the reach of PhiLab's publications, you can help us by participating in social media! A simple 'like', comment or share helps us disseminate knowledge to the sector.

We now have four active social media platforms , there's one for everyone, no matter your style!

PhiLab students still have access to the [Facebook group](#) which is reserved for them.



Facebook Twitter LinkedIn Youtube Academia

This newsletter is sent by the Canadian Partnership Research Network

[Unsubscribe](#)