



Philanthropy & Food Security



Walking into a local grocery store and seeing empty shelves can be a frightening sight for consumers who depend on the global shipping industry and supply chains to feed their family. At the onset of the COVID-19 pandemic, empty grocery shelves became commonplace due to an [unprecedented demand](#) for food and supplies. [Food insecurity is defined](#) as the “inability to acquire or consume an adequate diet quality or sufficient quantity of food in socially acceptable ways.”

Generally, families face food insecurity when their income is inadequate to purchase quality food, however, the COVID-19 pandemic exposed some vulnerabilities in Canada’s food supply-chain. For example, at the beginning of the COVID-19 pandemic, Newfoundland and Labrador had just a “five-day supply of food” that was [further threatened](#) by potential shipping service closures.

Place-based philanthropic organizations play a key role in supporting post-pandemic community recovery strategies. In this edition of the newsletter, we explore the intersection of food security and philanthropy through innovative case studies and stories of resilient communities responding to the global health crisis.

Enjoy your reading!

Newsletter Contents

- **Special Edition: Philanthropy & Food Security**
- Next edition: Spotlight on PhiLab Researchers
- Recent Publications
- Upcoming events
- News from our Regional Centers
- News from our Members
- News from our Partners
- Featured Philanthropic Profile
- Alliance featured article of the month

Local meals-on-wheels program helps rural seniors cope with COVID-19 isolation

by Roza Tchoukaleyska, Atlantic Hub
published by The Conversation Canada



Hubs of a New Normal: Bringing new life and community health hubs to old buildings of the Great Northern Peninsula of Newfoundland and Labrador

by Samantha Young, Atlantic Hub

PhiLab Interviews: Beth Hunter, Program director at
the McConnell Foundation

by David Grant-Poitras, Quebec Hub



Beyond the assortment of battles against food waste
and food insecurity: the need for coordinated action

by Éliane Brisebois and René Audet, Quebec Hub

Les fondations face à l'ODD 2 « Faim 'Zéro' » à
Montréal : une forme de citoyenneté alimentaire ?

by Katia Scherer, Quebec Hub



Limits and challenges of access to agroecological
food – social technology and solidarity marketing at
the Bem da Terra Virtual Market, Pelotas, Brazil

by Miria Raquel da Rocha, Tiago de Garcia Nunes
and Aline Mendonça dos Santos,
International Research Unit - Latin America

PhiLab Interviews: Jean-Raymon Momo, President of
the Club des petits déjeuners africains (CAPD)

by Lynda Rey, Quebec Hub & International Research
Unit - Africa





Research Paper: Northern Manitoba Food, Culture and Community Collaborative An exploration of an innovative collaborative model

by Corrie Lynn McDougall, Western Hub

Summary Report, by Kristen Pue, Ontario Hub

Food Security under the spotlight in Northern Ontario: Partnerships and people making it happen

by United Way Canada



ECSF Stories: COVID-19 Has Exacerbated Food Insecurity—Here’s How 3 Organizations are Stepping Up



by Community Foundations Canada

NOURISH - The future of food in health care

An initiative by The McConnell Foundation



Upcoming Special Edition: Spotlight on PhiLab's Research members

Next month's special edition is led by PhiLab's National Hub and will present a **Spotlight on the Network's Researchers and Research Projects.**

If you would like to share content for this edition please contact Katherine Mac Donald at:
mac_donald.katherine@uqam.ca



News

Recent Publications

L'Année PhiLanthropique
The PhiLanthropic Year



We are happy to share the second edition of our annual, bilingual journal on philanthropy, **The PhiLanthropic Year**, with you.

This edition was a collaboration with The Circle on Philanthropy and Aboriginal People of Canada.

We invite you all to share the publication within your networks!

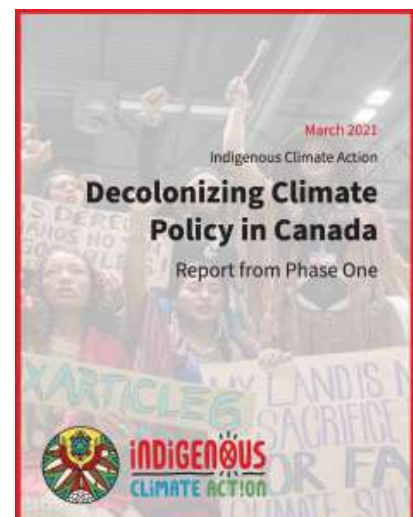
[Read the full journal here](#)

New report by Indigenous Climate Action

Decolonizing Climate Policy in Canada: Report from Phase One

[Find the PDF version of the report here](#)

[Find the executive summary here](#)





The Advisory Committee on the Charitable Sector (ACCS) has released its first report. This is the first of several that are planned to be released this year. [Peter Elson](#), Co-director of PhiLab, is a member of the ACCS and encourages all PhiLab partners, researchers, and students to read the report.

[Find the full report here](#)

Important events

PhiLab Regional Conferences: Register now!

Each Hub is hosting a regional conference this Spring, discover their program and register at the links provided below.



Quebec Hub Regional Conference
"Rôle, fonction et impact de la philanthropie"
and "Philanthropie à l'extérieur des métropoles"

May 5th & 6th

[ACFAS Conference information here](#)

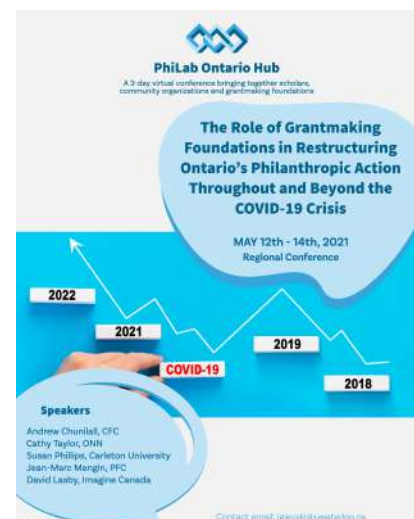
May 7th

[Find the Full program and Register here](#)

Ontario Hub Regional Conference
The Role of Grantmaking Foundations in Restructuring Ontario's Philanthropic Action Throughout and Beyond the COVID-19 Crisis

May 12th – 14th, 2021

[Find the Full Program and Register here](#)





Atlantic Hub Regional Conference

Mapping the Landscape: Philanthropy and Community Investment in Atlantic Canada

June 3rd and 4th, 2021

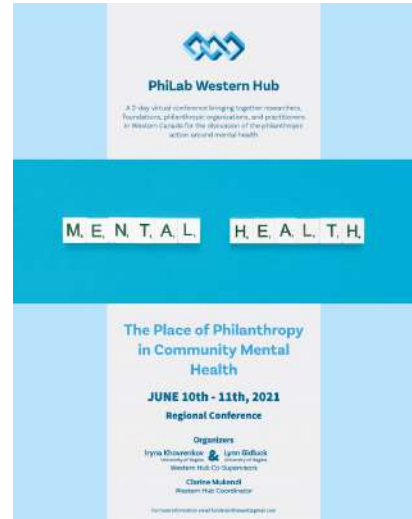
[Find the Program and Register here](#)

Western Hub Regional Conference:

The Place of Philanthropy in Community Mental Health

June 10th and 11th, 2021

[More information here](#)





[David Grant-Poitras](#) , newly appointed Coordinator of the Quebec Hub is one of the 36 finalists selected from over 600 applicants for the Pierre Elliott Trudeau Foundation's prestigious [2021 Scholarship and Engaged Leadership program](#).

PhiLab is proud to offer opportunities for the students in the Network to distinguish themselves from their peers.

Congratulations David!

The Quebec Hub has a new student:

[Roberto Collin](#) has a Bachelor's degree in Sustainable Development, with a specialization in Environmental Economics from Université Laval. He is a Master's candidate at the Management School of Université du Québec à Montréal (UQAM).



[Find his profile here](#)

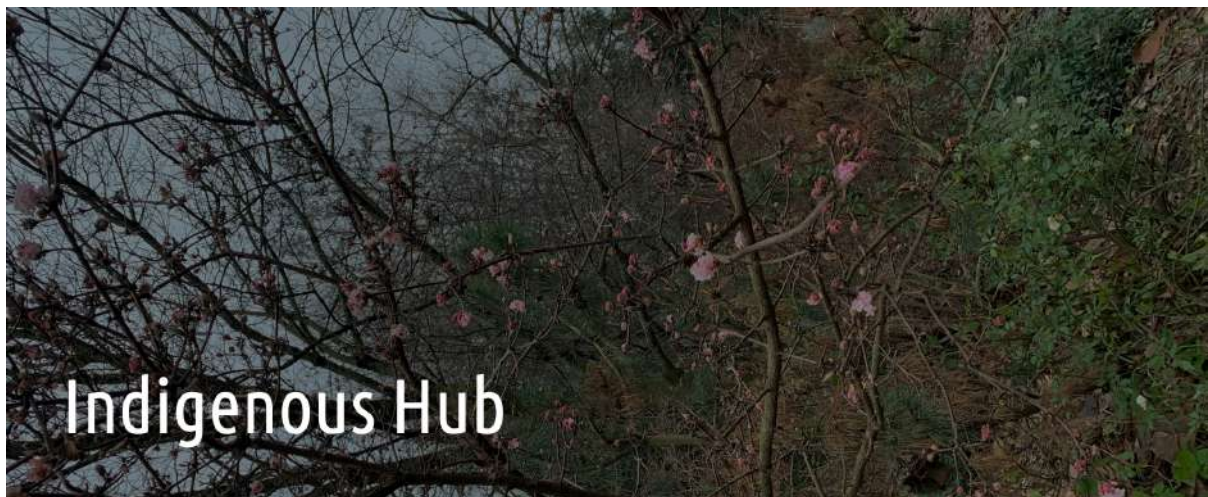
Most recent interview



[Interview with Thierry Durand, Director General of Convergence action bénévole and 211](#)

Part 1: Highlighting an atypical volunteer center
(In French only)

by [Charles Duprez](#), Quebec Hub



The Circle is hiring a full-time Operations Manager



"The Operations Manager will be responsible for providing inspired operations leadership for The Circle. This will involve developing, implementing and adjusting organizational operations and to formalize policies and procedures for our governing circle and members."

Apply by April 30th at 12pm PT

[The full job description can be found here](#)

Funding the future: feminist philanthropy in practice

The Circle on Philanthropy and Aboriginal Peoples helped organize the following webinar on Feminist Philanthropy along with other PhiLab partners CFC, EFC and PFC.



[Watch the recording here](#)



News from PhiLab's International research unit in France



[Philanthropy, Class and Tax in France, WP n°1](#)

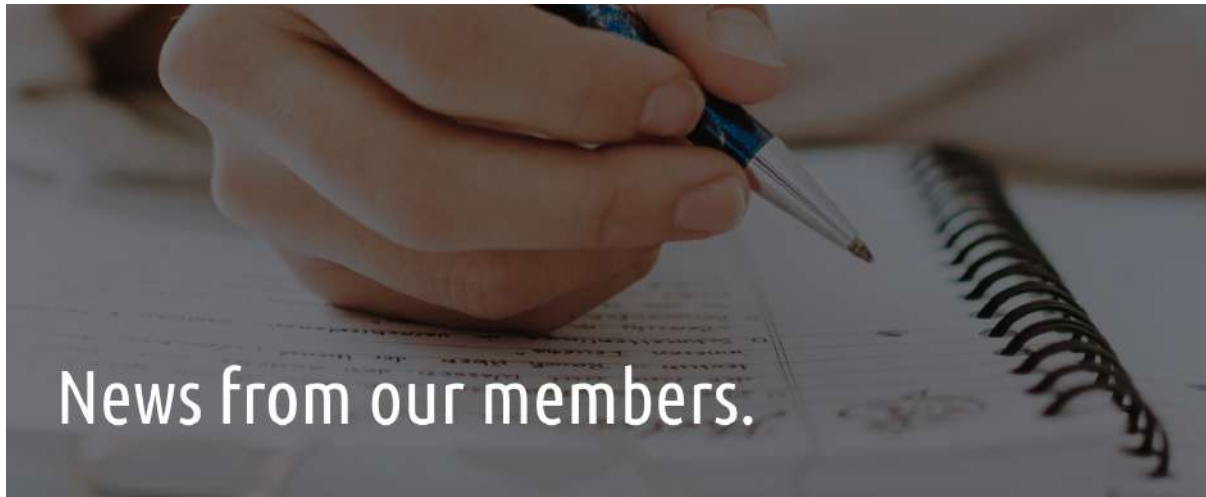
[« Tous Unis Contre le Virus » Alliance : A Field Analysis WP#2](#)

[Utopia 56 WP#3](#)

[Anne Monier](#), a member of PhiLab's international research unit in France, is now on the ESSEC's Chair on Philanthropy. Since 2020, they have a podcast on philanthropy research. We invite you to listen to their many episodes:



[La philanthropie en question\(s\)](#)
&
[Vers une philanthropie stratégique](#)



[La philanthropie des femmes, un phénomène invisibilisé](#)

A recent article by [Anne Monier](#), member of PhiLab's international research unit in France, was published in *The Conversation*.

"While women's philanthropy has always been significant, it was cast to the shadows for a long time. There are many reasons that could explain this paradox."

[Dr. Susan Phillips](#), member of the Ontario Hub, has recently published an article on PANL Perspectives presenting the sector's 3 key priorities for policy-makers:

1. Modernize the regulatory framework for charities
2. Collect better data on the sector
3. Secure access to more stable funding



Read the full article here: [The #1 Policy Issue for Canada's Philanthropic & Charitable Sector](#)

[Perceptions and Conceptions of "Place" in Australian Public Foundations](#)



New article by [Alexandra Williamson](#), member of PhiLab's international research unit in Australia, published in the Nonprofit and Voluntary Sector Quarterly Journal.


"While PubAFs vary greatly in their purposes, stakeholders, and operating models, place emerges as a strong element of foundations' perceived identity, strategic focus, and grantmaking."

[Adam Saifer](#), Supervisor of the Quebec Hub, has recently published an article in the Journal of Organization Studies:

[Data and Organization Studies: Aesthetics, emotions, discourse and our everyday encounters with data](#)

"...we hope to contribute to a more politicized, historicized, and democratized data studies that can support movements for social, economic, and ecological justice."





News from our partners.

[Book Review: Philanthropy: From Aristotle to Zuckerberg, by Paul Valley](#)



The Philanthropist

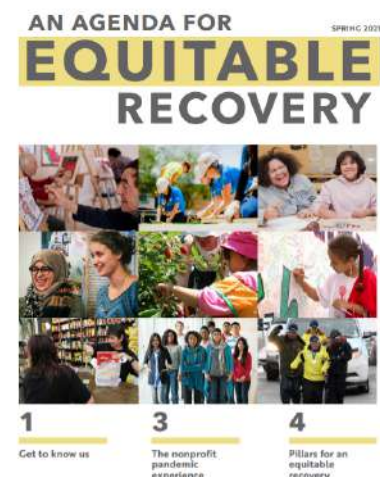
"If you have been looking for a comprehensive history of the concept and practice of Western philanthropy, you have it now in the form of this lengthy but very readable book by Paul Valley, a British writer and commentator."

Review by Hilary Pearson, published by The Philanthropist

New publication by Imagine Canada

[An Agenda for Equitable Recovery](#)

In response to the major challenges that the COVID-19 pandemic has created, a group of organizations have come together to put forward recommendations to strengthen the nonprofit sector through the recovery.



Featured PhiLanthropic Profile

PhiLab's Quebec Hub has launched a [Philanthropic Profile Database](#) in order to highlight the sector's professionals and the diversity of their roles.

Would you like to be featured here? [Fill out your profile here.](#)



Émilie Russo is the Director of Development & Communications at Fondation OLO

"I love my role at the Foundation. It allows me to contribute directly to our mission: offering families equal opportunities to bring healthy babies into this world and establish healthy habits early on in life."

[Consult her full profile here](#)

Alliance featured article of the month

Food today, a new food system tomorrow

Food today, a new food system tomorrow

This article published on Alliance Magazine's blog highlights 4 key lessons on how to respond to an acute crisis, while deepening transformative change:

Lesson 1: Take the lead from grassroots organisations and BIPOC communities

Lesson 2: Support food sovereignty *and* food security

Lesson 3: Invest in long-term resilience

Lesson 4: Tap the power of pooled funds

[Read the full article here](#)



Support PhiLab: Participate on social media!

In order to increase the reach of PhiLab's publications, you can help us by participating in social media! A simple 'like', comment or share helps us disseminate knowledge to the sector.

We now have **five active social media platforms**, there's one for everyone, no matter your style!

PhiLab students still have access to the [Facebook group](#) which is reserved for them.



Facebook



Twitter



LinkedIn



Youtube



Academia

This newsletter is sent by the Canadian Partnership Research Network

[Unsubscribe](#)